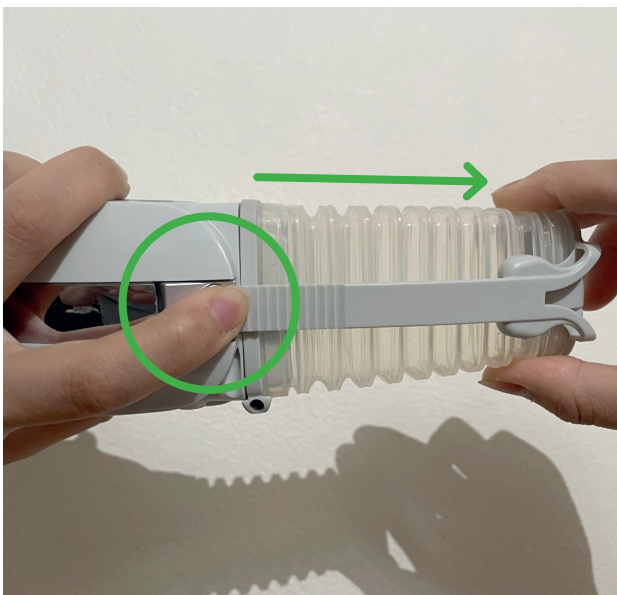


CLEANSPACE HALO ADJUSTING DO'S & DON'TS

✓ DO



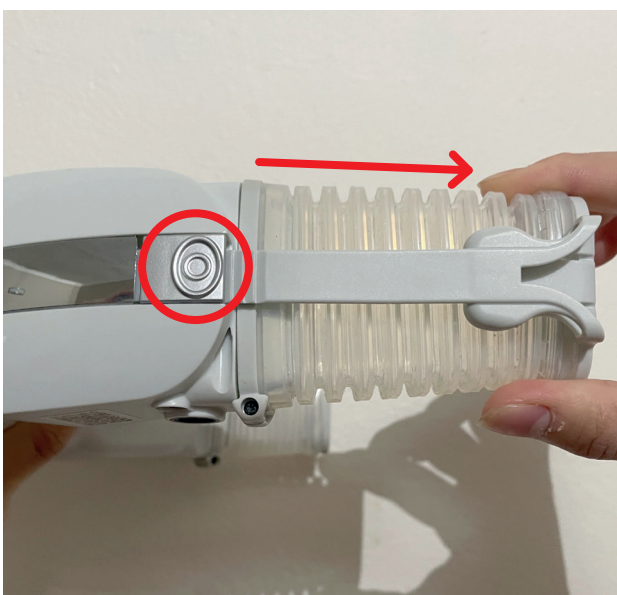
Press adjustment button when extending the bellows



When doffing, ensure Airclip is unclipped before pulling mask



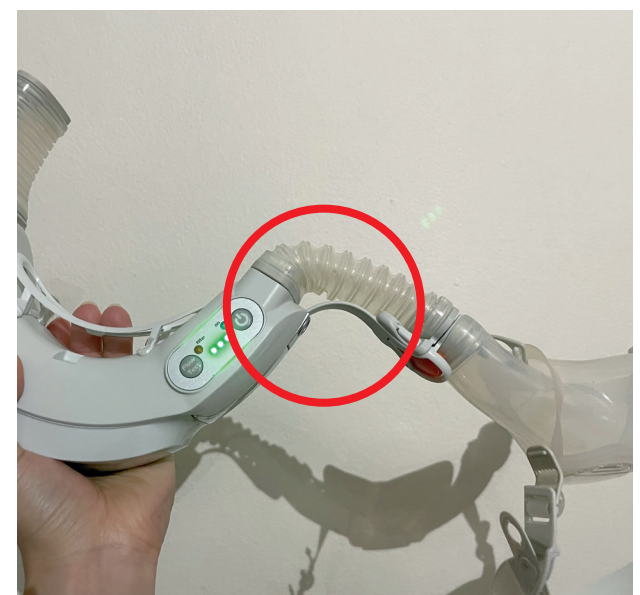
✗ DON'T



Pull the bellows without pressing the adjustment button



Pull on mask without pressing the adjustment button



Hold the CleanSpace HALO like this